

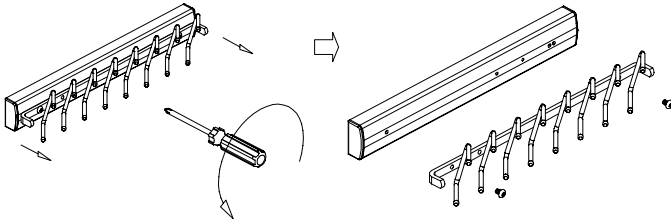
INSTALLATION INSTRUCTIONS

FOR PREMIER TIE RACK & BELT RACK

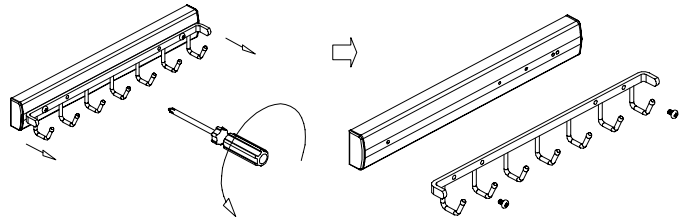
Note: Left side mount shown, Reverse for right side mount.

STEP 1: Remove attachment before mounting to partition.

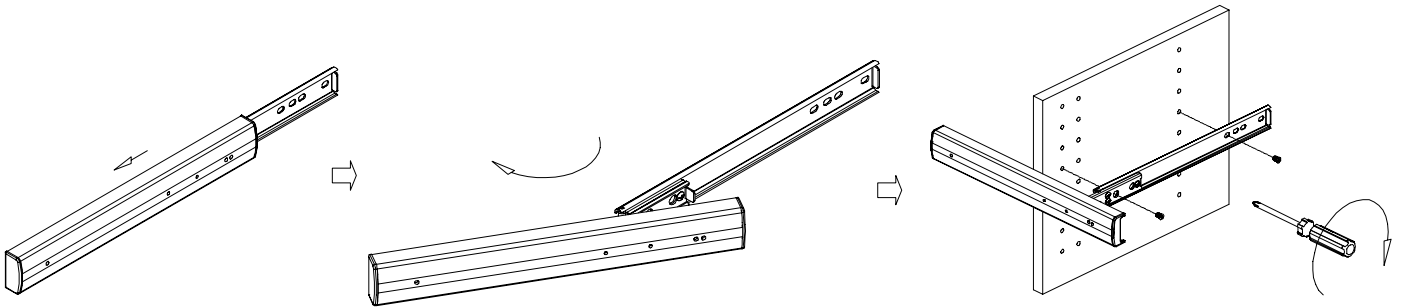
Tie



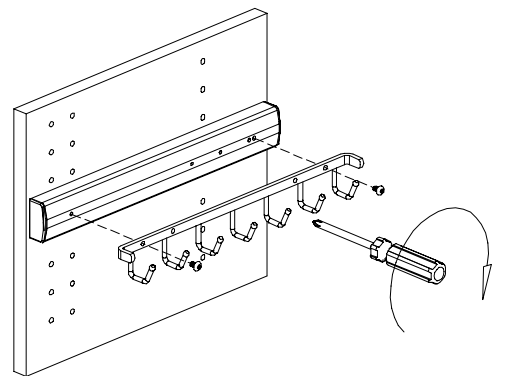
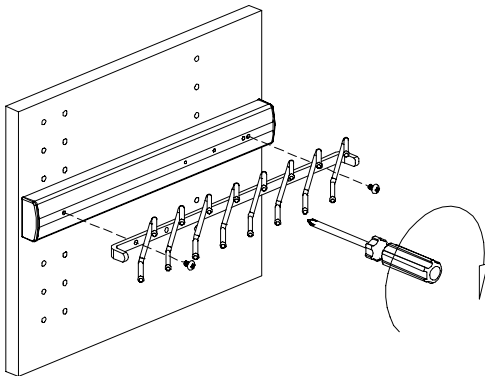
Belt



STEP 2: Mount slide base using 2 euro-screws provided.



STEP 3: Reattach the tie and belt rack.



Installation complete.

