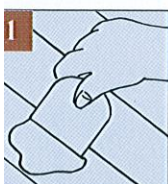


# SO EASY WITH TIMBERMATE

## FILLING KNOT/NAIL HOLES



### 1. APPLY:

Using a plastic or high quality stainless steel putty knife, apply TIMBERMATE directly out of the tub prior to sanding or first coat. (NOTE: If filler turns black, the putty knife is not high content stainless steel; however, the black will sand off.)



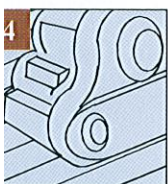
### 2. FILL:

If hole is greater than 6mm, fill by layering TIMBERMATE in 6mm increments.



### 3. DRY:

Let TIMBERMATE dry thoroughly or use heat gun or similar to speed drying. TIMBERMATE is properly dry if it sands to the consistency of baby powder.) Drying time depends on depth of fill.



### 4. SAND:

Final sand and remove all dust and debris. (NOTE: Do not use a grit coarser than 120.)



### 5. STAIN:

Apply stain to the timber (if staining). Do not rub the stain in with an aggressive action. Doing so will remove TIMBERMATE. Filler must be dry before staining.



### 6. FINISH COAT:

Apply any final finish coat. Filler must be dry.

## TROWEL FILLING



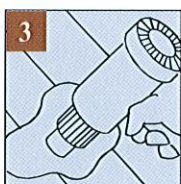
### 1. MIX:

Match the color to the wood. Mix TIMBERMATE in the tub with warm water (a mixer attached to a heavy duty drill is ideal). Slowly pour the water in as you mix – usually about 15% water by weight. Mix until TIMBERMATE has the consistency of toothpaste.



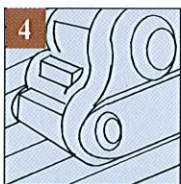
### 2. APPLY:

Apply TIMBERMATE, with a plastic trowel, or rubber float across the grain over the entire timber. Make sure the filler is forced into deep voids. Do not apply TIMBERMATE too heavily – a small amount goes a long way. Remove all excess TIMBERMATE. (Return excess to the TIMBERMATE container - no waste.)



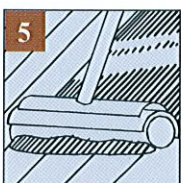
### 3. DRY:

Let TIMBERMATE dry thoroughly or use heat gun or similar to speed drying. TIMBERMATE is properly dry if it sands to the consistency of baby powder.) Drying time depends on depth of fill.



### 4. SAND:

Final sand and remove all dust and debris. (If grain filling do not use a grit coarser than 120.)



### 5. STAIN:

Apply stain to the timber (if staining). Do not rub the stain in with an aggressive action. Doing so will remove TIMBERMATE. Filler must be dry before staining.



### 6. FINISH COAT:

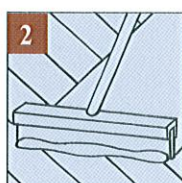
Apply any final finish coat. Filler must be dry.

## GRAIN FILLING



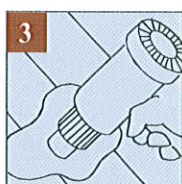
### 1. MIX:

Match the color to the timber. Mix TIMBERMATE in the tub with warm water (a mixer attached to a heavy duty drill is ideal). Slowly pour the water in as you mix – TIMBERMATE should have the consistency of thick paint. Allow TIMBERMATE mixture to dry to the consistency of toothpaste before sealing tub.



### 2. APPLY:

Apply TIMBERMATE to the timber and squeegee it or rub across the grain over the entire job. Do not apply TIMBERMATE too heavily – a small amount goes a long way. Remove all excess TIMBERMATE (return excess to the TIMBERMATE container - no waste).



### 3. DRY:

Let TIMBERMATE dry thoroughly or use heat gun or similar to speed drying. TIMBERMATE is properly dry if it sands to the consistency of baby powder.) Drying time depends on depth of fill.



### 4. SAND:

Final hard plate or screen and remove all dust and debris. (NOTE: Do not use a grit coarser than 120.)



### 5. STAIN:

Apply stain to the timber (if staining). Do not rub the stain in with an aggressive action. Doing so will remove TIMBERMATE. Filler must be dry before staining.



### 6. FINISH COAT:

Apply any final finish coat. Filler must be dry.