

APPLICATION

- ▶ Widely used in lighter commercial and industrial applications.
- ▶ To cover any width of opening, any number of doors can be used.
- ▶ To accommodate different building designs, doors can slide to one or both sides.
- ▶ Hinged door for easy access may be incorporated into a sliding door.
- ▶ Where doors are fitted externally, a canopy is recommended.

DOOR SPECIFICATION

Track System: Single Run 200

For Individual Doors:

Max Door Height	3000mm
Max Door Weight Nylon Tyre Hanger	200kg
Max Door Weight Steel Tyre Hanger	200kg
Door Thickness	35-48mm

For ease of operation it is recommended that the door width should not exceed 75% of door height.

Timber doors for interior use can be of flush construction or glazed.

Timber doors for industrial applications should be framed, ledged and braced.

Metal doors should be constructed of box section, channel or angle framing, well braced and clad with flat or corrugated sheets.

HARDWARE SPECIFICATION

Track:	290 (2mm thick)
Material	Galvanised steel
Standard lengths	2000mm, 3000mm, 4000mm and 6000mm

Brackets:

Face fitted Aluminium Alloy	1A/290	-
Face fitted Aluminium Alloy	9A/290	-
Soffit fitted Pressed Steel	2S/290	-
Soffit fitted Aluminium Alloy	3A/290	-
Soffit fitted Aluminium Alloy	4A/290	-
Face fitted Stainless Steel, angle	-	1SS/250

Fit at 900mm maximum centres.

Bracket End Clips:

For aluminium brackets	A/290EC	-
------------------------	---------	---

Hangers (2 per door):

Hangers

Timber Doors – apron fitting	53KN or 53KS	-
Timber Doors – angle fitting	52KN or 52KS	52SS/KN
Timber Doors – plate fitting	57KN or 57KS	57SS/KN
Metal Doors – angle frame	56KN or 56KS	56SS/KN
Metal Doors – box frame	56KLN or 56KLS	56SS/KLN
Metal Doors – plate fitting	57KN or 57KS	57SS/KN

All hangers suffixed 'N' have nylon tyre wheels and are fitted with ball race bearings. Nylon tyre wheel hangers should not be used on installations involving temperatures exceeding 80°C.

All hangers suffixed 'S' have solid steel wheels and are fitted with ball race bearings.

Guides:

Timber Doors – face fitting	105R/97	-
Timber Doors – plate fitting	106RB/94	106RB/94
Metal Doors – angle frame	104P/97	-
Metal Doors – box frame	104PL/97	-
Multiple Doors	102W/94	-

Guides with suffix 97 are used with channel 100.

All steel parts are zinc plated.

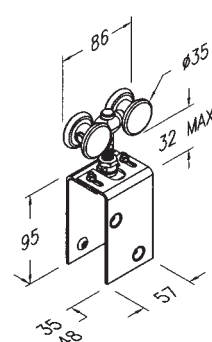
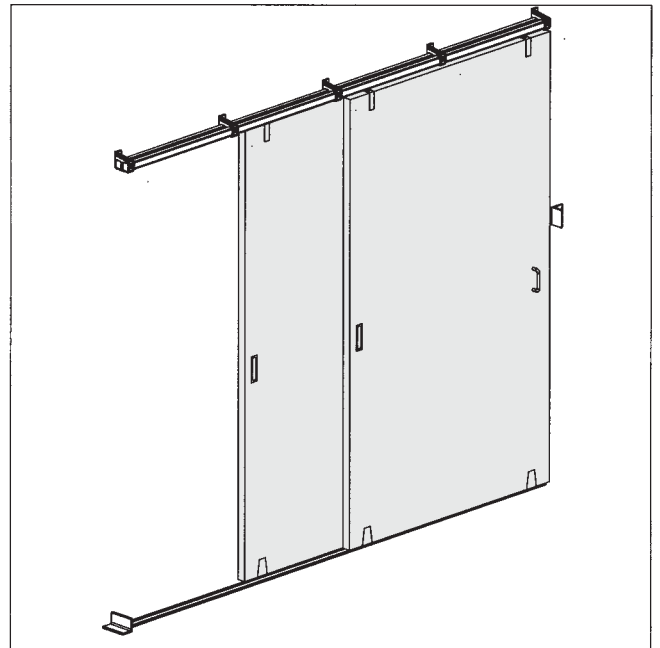
Channels:	100	Galvanised steel
	94A	Aluminium
	94B	Brass

Standard lengths

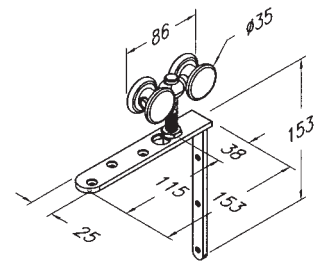
100	2000mm, 3000mm and 4000mm
94A and 94B	2000mm, 3000mm, 4000mm and 6000mm

100 pre-drilled for lugging into concrete floor and for use with drainage funnel.
94A and 94B channels drilled and countersunk for screwing to timber floor or attaching to lugs 94L when installing in concrete floor.

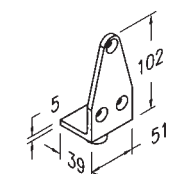
Accessories: Bow Handles, Flush Pulls, Surface Bolts, Flush Bolts and Door Stops.



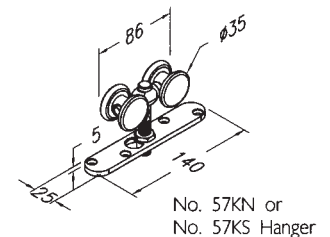
No. 53KN or 53KS Hanger



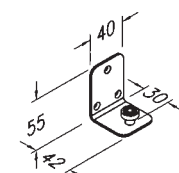
No. 52KN or 52KS Hanger



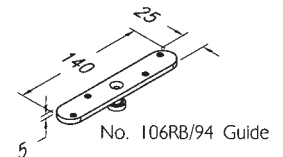
No. 105R/97 Guide



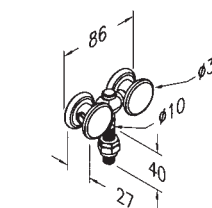
No. 57KN or No. 57KS Hanger



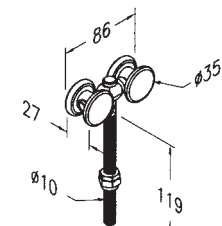
No. 102W/94 Guide



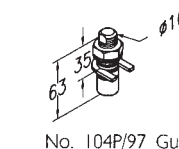
No. 106RB/94 Guide



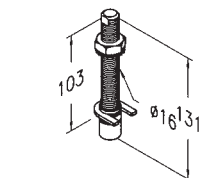
No. 56KN or No. 56KS Hanger



No. 56KLN or No. 56KLS Hanger



No. 104P/97 Guide



No. 104PL/97 Guide

Single Run 200

FOR TOP HUNG STRAIGHT SLIDING DOORS, MAX. 200kg EACH

HENDERSON®

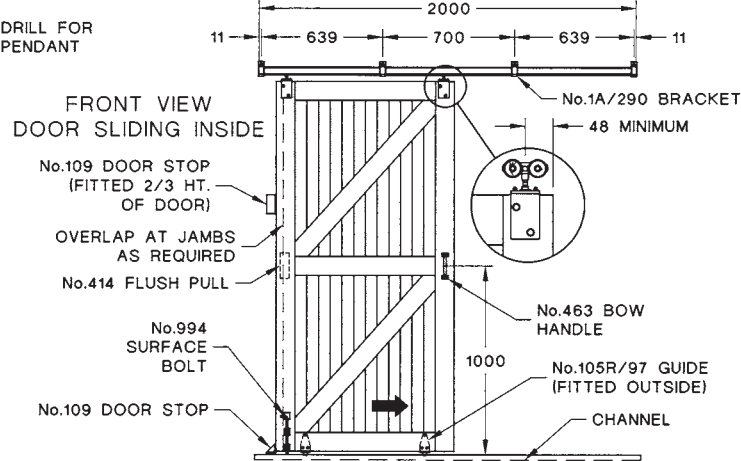
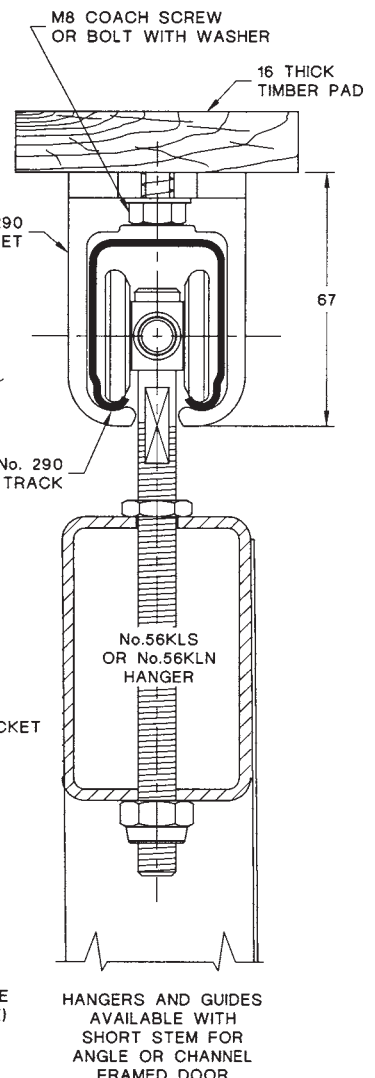
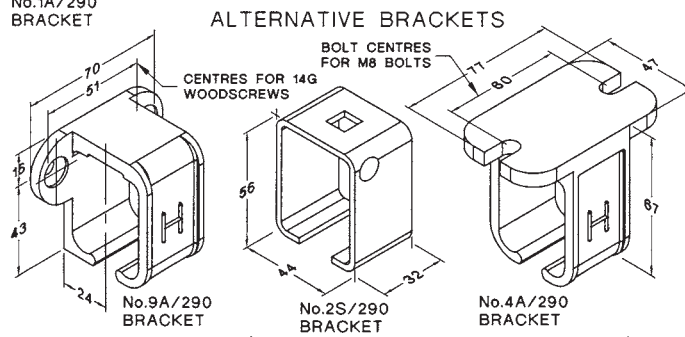
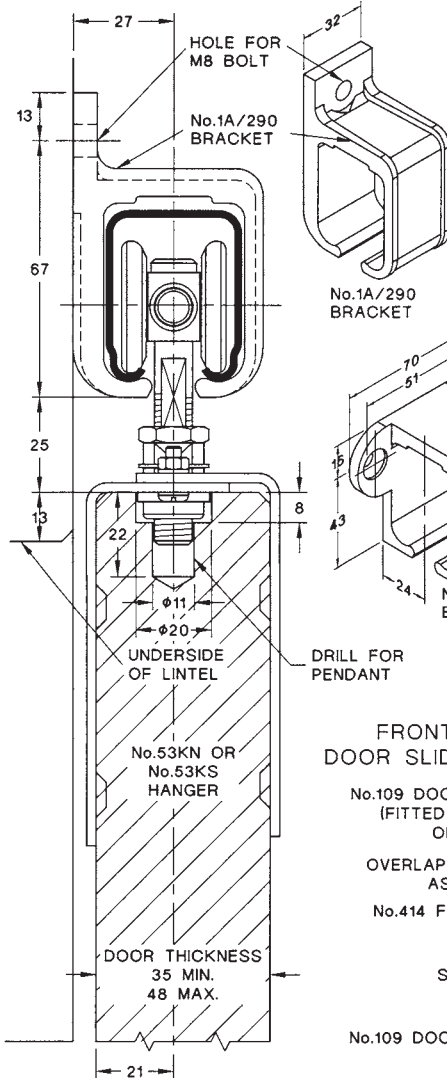
SLIDING & FOLDING DOOR HARDWARE

AUSTRALIA'S WIDEST RANGE

STANDARD TRACK LENGTH	2000	3000	4000	6000
NORMAL BRACKET CENTRES	650 - - 700	750	800	750

FOR HEAVY DOORS, OR THOSE SUBJECTED TO ABNORMAL USE, BRACKET CENTRES SHOULD BE REDUCED TO 500

CENTRE 'E' IS BALANCE OF TRACK LENGTH LESS 11 WITH ALUMINIUM BRACKETS



SECTION SCALE 1:2

SECTION SCALE 1:2

