

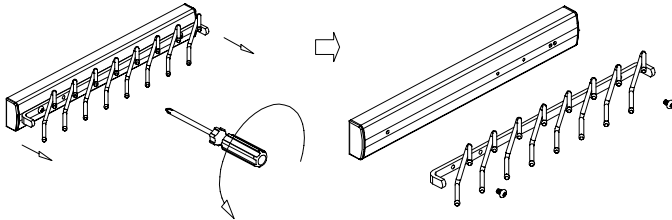
# INSTALLATION INSTRUCTIONS

## FOR PREMIER TIE RACK & BELT RACK

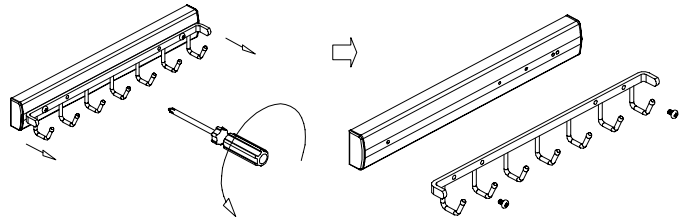
Note: Right side mount shown, Reverse for left side mount.

STEP 1: Remove attachment before mounting to partition.

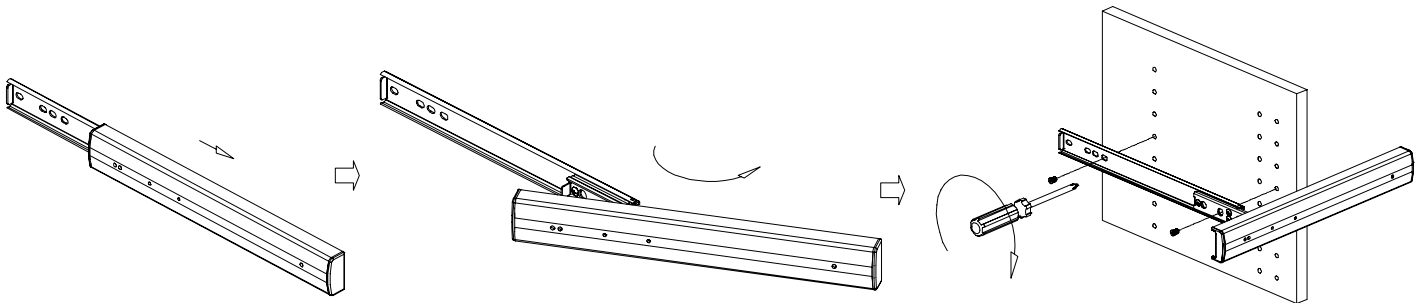
**Tie**



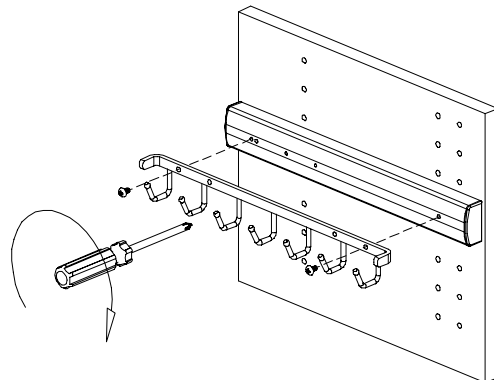
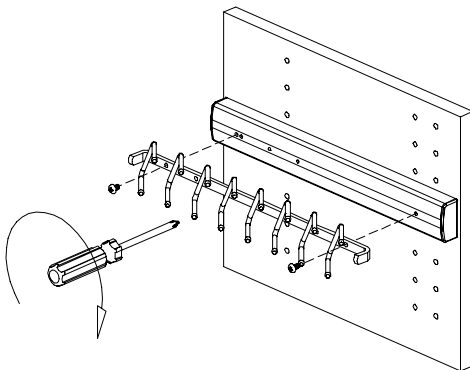
**Belt**



STEP 2: Mount slide base using 2 euro-screws provided.



STEP 3: Reattach the tie and belt rack.



Installation complete.

