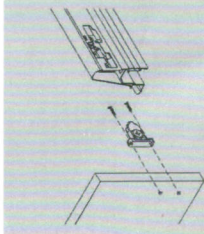
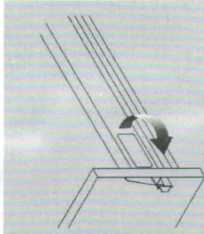


Installation & Disassembling manual

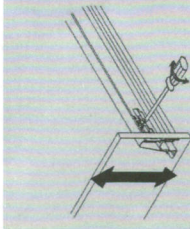
Install wooden drawer front



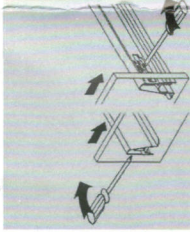
Disassemble wooden drawer front



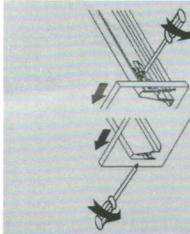
Wooden drawer front height adjustment: $\pm 2\text{mm}$



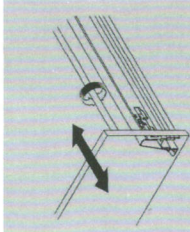
Drawer front right adjustment 1mm



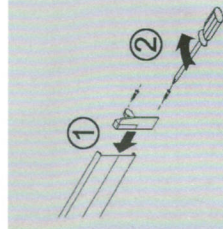
Drawer front left adjustment 1mm



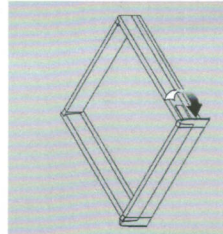
Gradient adjustment



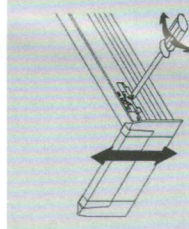
Install inner drawer front



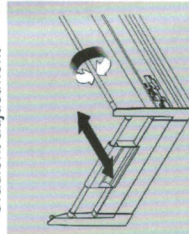
Disassemble inner drawer front



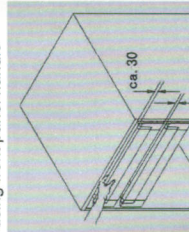
Inner drawer front height adjustment: $\pm 2\text{mm}$



Gradient adjustment



Special requirement for not using front panel handle



Bottom and back panels measurement

16mm Thickness panel
 LW: internal cabinet width

1 Back panel height (Refer to *)
 Back panel length=LW-89 \pm 0.5

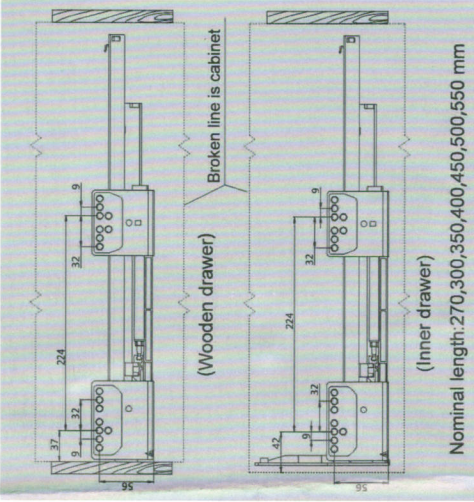
2 Bottom panel width=LW-75 \pm 0.5
 Bottom panel length=Nominal length-5mm
 (* if metal back is used:
 Bottom panel length=Nominal length-8mm)

3 Long tube=LW-71 \pm 0.5

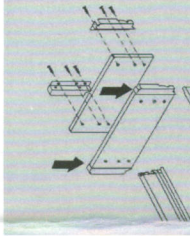
4 Aluminium front length=LW-87 \pm 0.5

Item No.	A88	A140	A164	A204
Back panel height	70	124	148	188

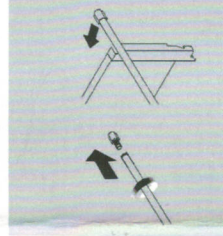
Slide installation



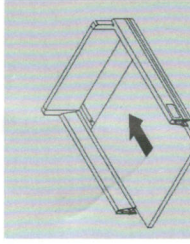
Drawer assembly



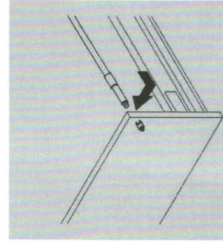
Gallery assembly



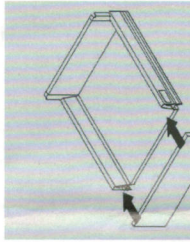
Drawer assembly



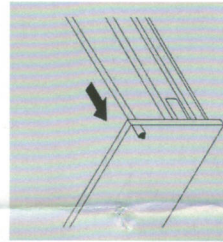
Gallery assembly



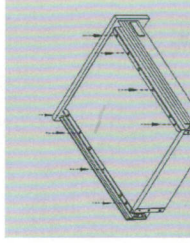
Drawer assembly



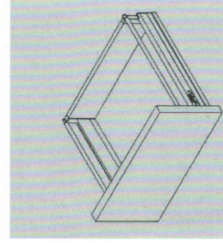
Gallery assembly



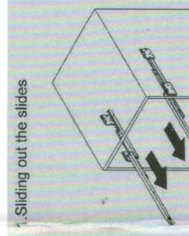
Drawer assembly



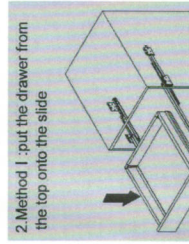
Gallery assembly



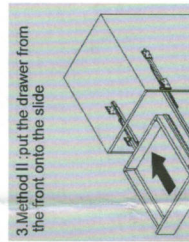
Install & Dismantle of drawer



Method I - put the drawer from the top onto the slide



Method II - put the drawer from the front onto the slide



Lift the drawer up for dismantle

