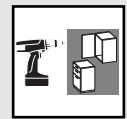
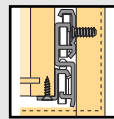


Over-extension runner for wooden drawers

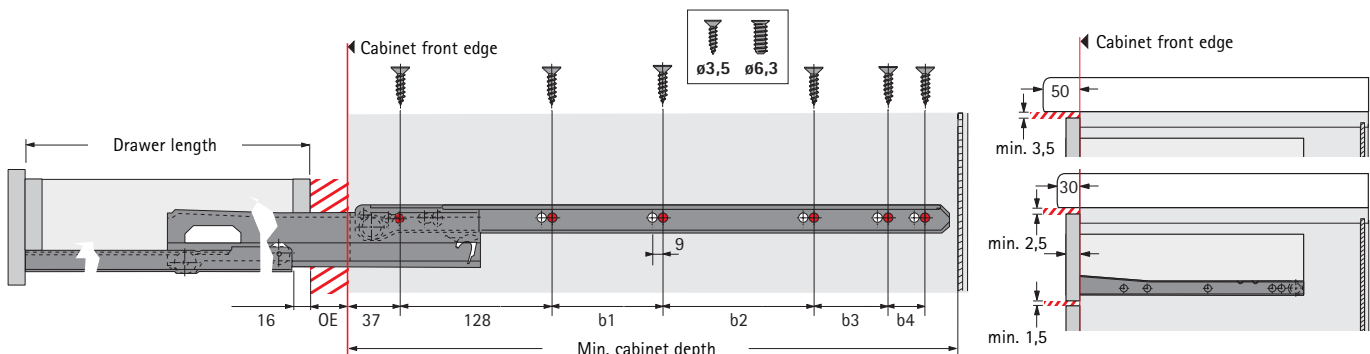
Roller runner FR 6142

Load capacity 50 kg

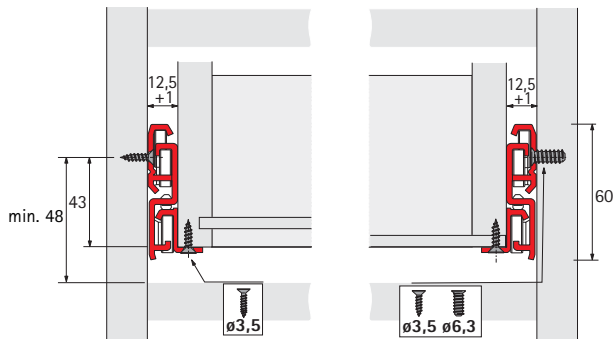


- Two-sided captive guide rail
- For screw-on assembly
- Integrated self-closing feature
- Automatic tolerance compensation + 2 mm
- Steel powder-coated white or brown
- Safety catch and lockable centre runner

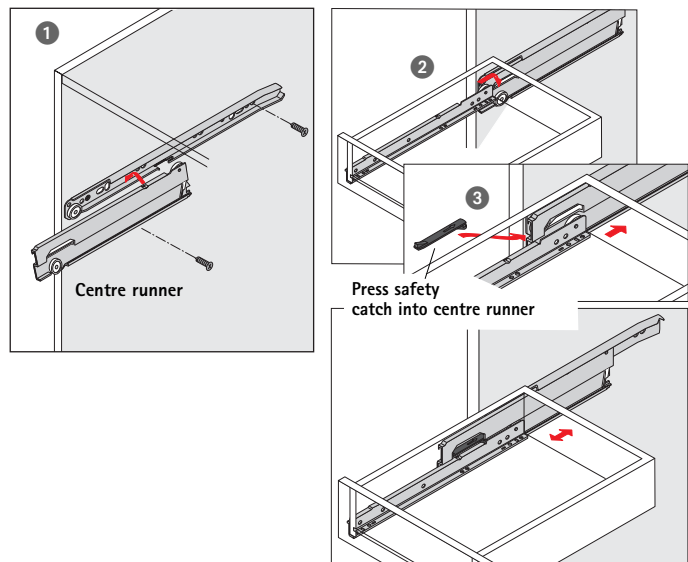
Drawer length mm	Min. cabinet depth mm	Over-extension OE mm	Hole spacing mm				Order no. white	brown	PU
			b1	b2	b3	b4			
250	255	10	-	-	-	-	0 041 633	-	1/4 sets
300	305	15	96	-	-	-	0 041 635	-	1/4 sets
350	355	15	96	64	-	-	0 041 637	0 041 636	1/4 sets
400	405	30	96	96	-	-	0 041 639	0 041 638	1/4 sets
450	455	30	96	128	-	-	0 041 641	0 041 640	1/4 sets
500	505	30	96	128	64	32	0 041 643	0 041 642	1/4 sets
550	555	30	96	128	128	-	0 041 645	0 041 644	1/4 sets
600	605	30	96	128	128	-	0 041 647	0 041 646	1/4 sets
650	655	30	224	224	-	-	0 041 649	-	1/4 sets
700	705	30	224	256	-	-	0 041 651	-	1/4 sets
750	755	30	224	256	-	-	0 041 653	-	1/4 sets
800	805	30	224	256	128	-	0 041 655	-	1/4 sets



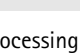



• = minimum number of screw-fixing positions



Assembly



	Dimensions mm	Order no.	PU
	ø 6,3 x 10,5	0 051 264	200
	ø 6,3 x 14	0 051 265	200
	ø 3,5 x 12	9 079 791	200
	ø 3,5 x 16	0 071 925	200

Processing technology see group 2