

KROME Shallow Cup Stainless Steel Hinge

TECHNICAL SPECIFICATIONS

- Opening degree: 100°
- Thickness of hinge cup: 10mm
- Diameter of hinge cup: 35mm
- Dimension of door (K): 3-7mm
- Range for door thickness: 13-26mm



KROME Shallow Cup Stainless Steel Hinge

- 35mm Diameter hole with a 10mm shallow cup depth
- Clip-on, full overlay with cam adjustment on hinge arm
- 304 grade Stainless Steel hinge & mounting plate
- 45mm drilling centres + 8mm dowel
- Includes 15.5mm 304 grade Stainless Steel mounting plate screws

DESCRIPTION	CODE
KROME SHALLOW CUP STAINLESS STEEL HINGE	450027

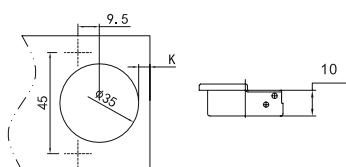
Note - The following components are not 304 grade Stainless Steel
 - Springs, dampener, link, door gap adjustment screw, clip-on trigger, U pivot and all single pivots.

Overlay application table

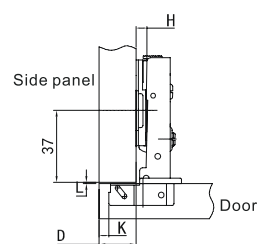
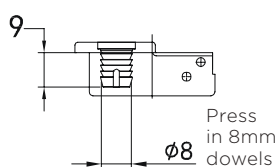
$$H=14+K-D$$

D \ H \ K	3	4	5	6	7
0	17	18	19	20	21

Cup drilling distance and depth

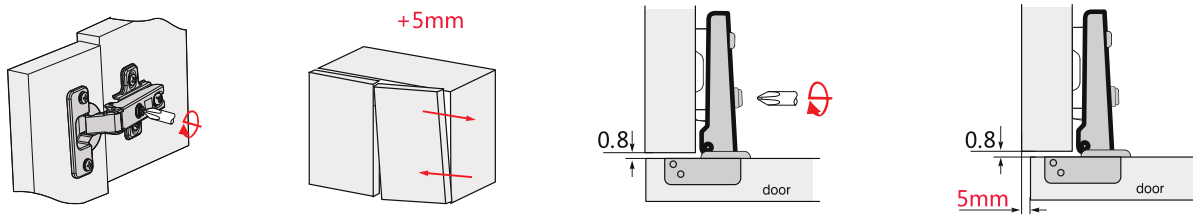


Dowels and Screws for 35mm cup accessories

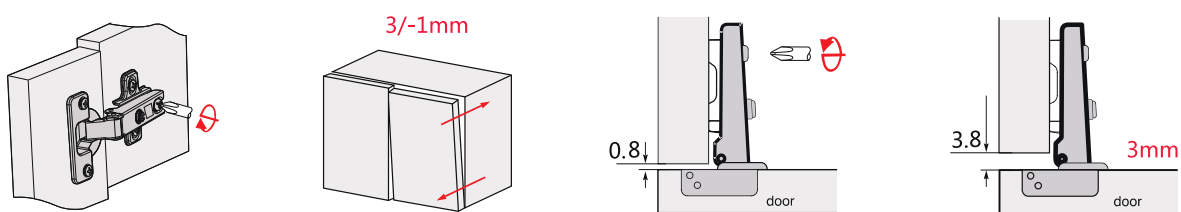


Door Adjustment

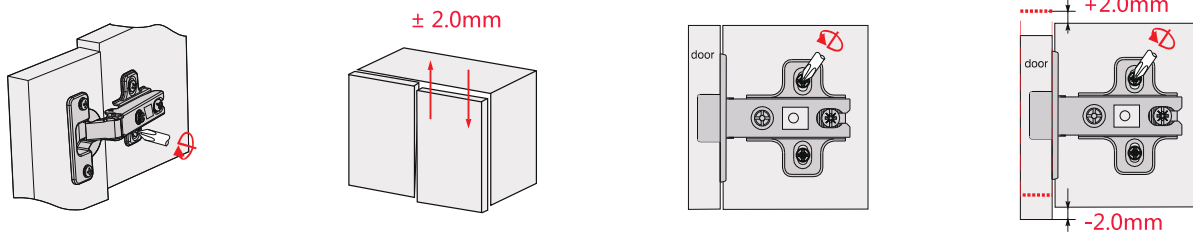
Side adjustment



Depth adjustment



Height adjustment



Door Height Chart

- The quantity of hinges depends on the width, the height and the weight of door.
- The drawing to the right can be used as reference.

