

Folding door fitting
Wing Line 780
for 1 folding door with 2 panels





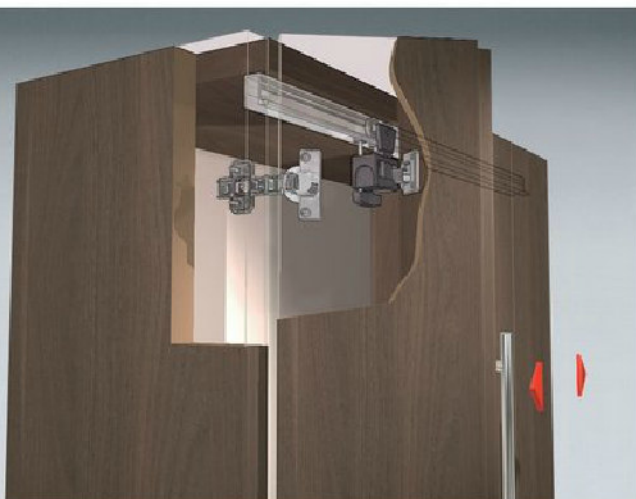
Broad and strong

Attractive styling, fast assembly and load-bearing function – the Wing Line 780 combines all these qualities in a very effective design.

A simple cabinet construction is sufficient, with no necessity to reinforce the top panel even with wider-type doors.

Unsurpassed also is the way in which its load-bearing function is teamed up with the benefits of rapid assembly: once assembled, the fitting is simply clipped into the runner profile where it is secured in place by two guide rollers.

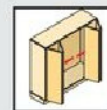
- Suitable for use throughout the home
- With runner profile on top panel
- Runner with load-bearing function
- Optionally with bottom guide
- For wooden doors or wood/aluminium frame doors
- Toolless quick-connect door assembly
- Cabinet design also suitable for hinged doors



Technical brief:

- Door weight max. 10 kg/door panel
- Door panel height max. 2200 mm
- Door panel width max. 500 mm
- Side-mounting with Sensys 8645i/Intermat 9943 fast-assembly concealed hinge

Folding door fitting Wing Line 780 for 1 folding door with 2 panels System components



Runner profile

- Screw-on version
- Length 2000 mm
- Aluminium, silver anodised or white



Finish	Product code	PU
silver anodised	9 013 759	1
white	9 002 063	1

Runner for fast assembly

- With 1 concealed hinge
- Nickel-plated steel/ grey plastic



Drilling template for centre hinge

- For adjusting reveals from 2 to 5 mm

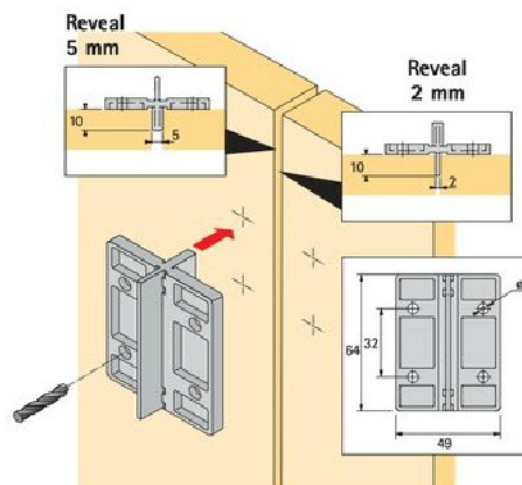


Product code	PU
1 079 491	150

Article	Product code	PU
Runner for fast assembly left fitted	1 079041	50 sets
Runner for fast assembly right fitted	1 079042	50 sets

Folding door hinge

- For fast assembly
- Screw-on version
- Nickel-plated steel/ grey plastic



Article	Product code	PU
Part of the hinge with pin	1 077 338	200
Runner for fast assembly steel flap	1 077 339	200

Tungsten carbide drill bit

- Turning clockwise
- Length 57 mm
- Shaft diameter 10 mm
- Diameter 35 mm



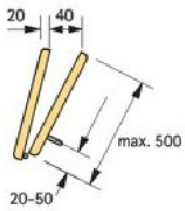
Product code	PU
9 106 101	1

Intermat 9943 hinges/mounting plates should be ordered separately – see group 3



Folding door fitting Wing Line 780 for 1 folding door with 2 panels Function/Assembly

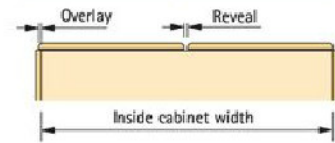
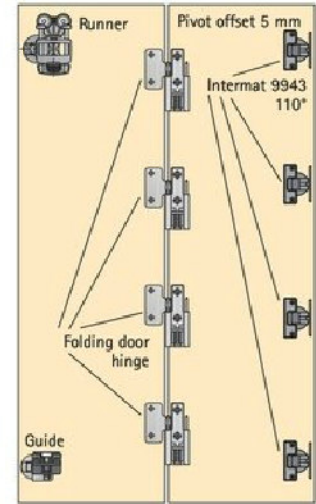
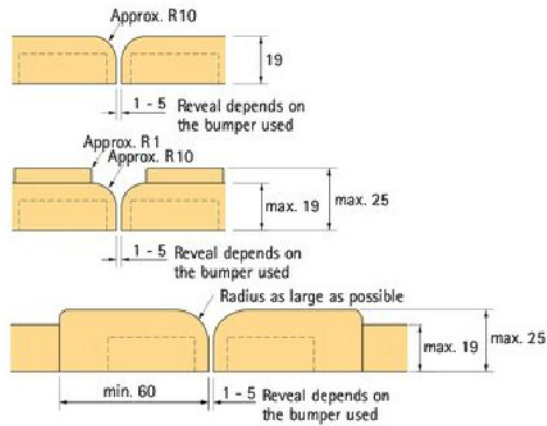
2-panel door set



2-panel folding door

Panel width max. 1000 mm
Door weight/panel max. 10 kg
Door panel height max. 2200 mm

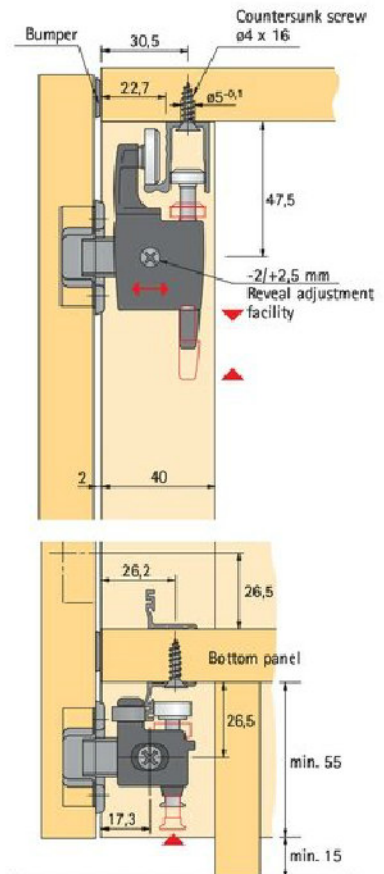
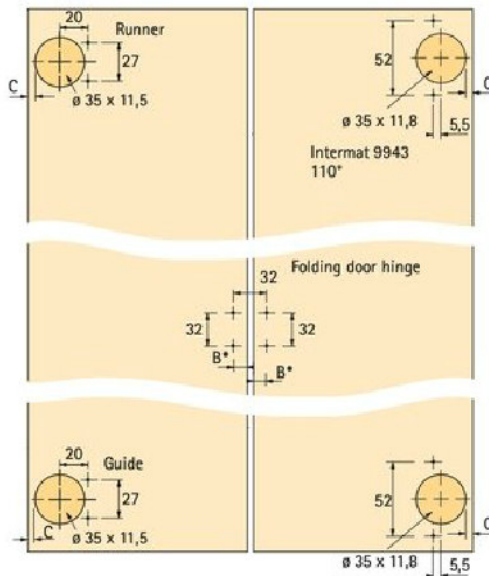
Recommended door panel contours for reducing risk of crushing



Calculation of door width/door panels

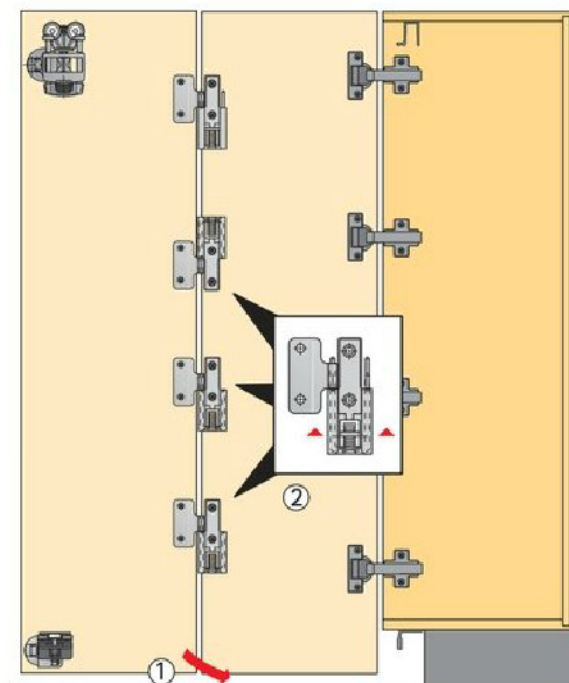
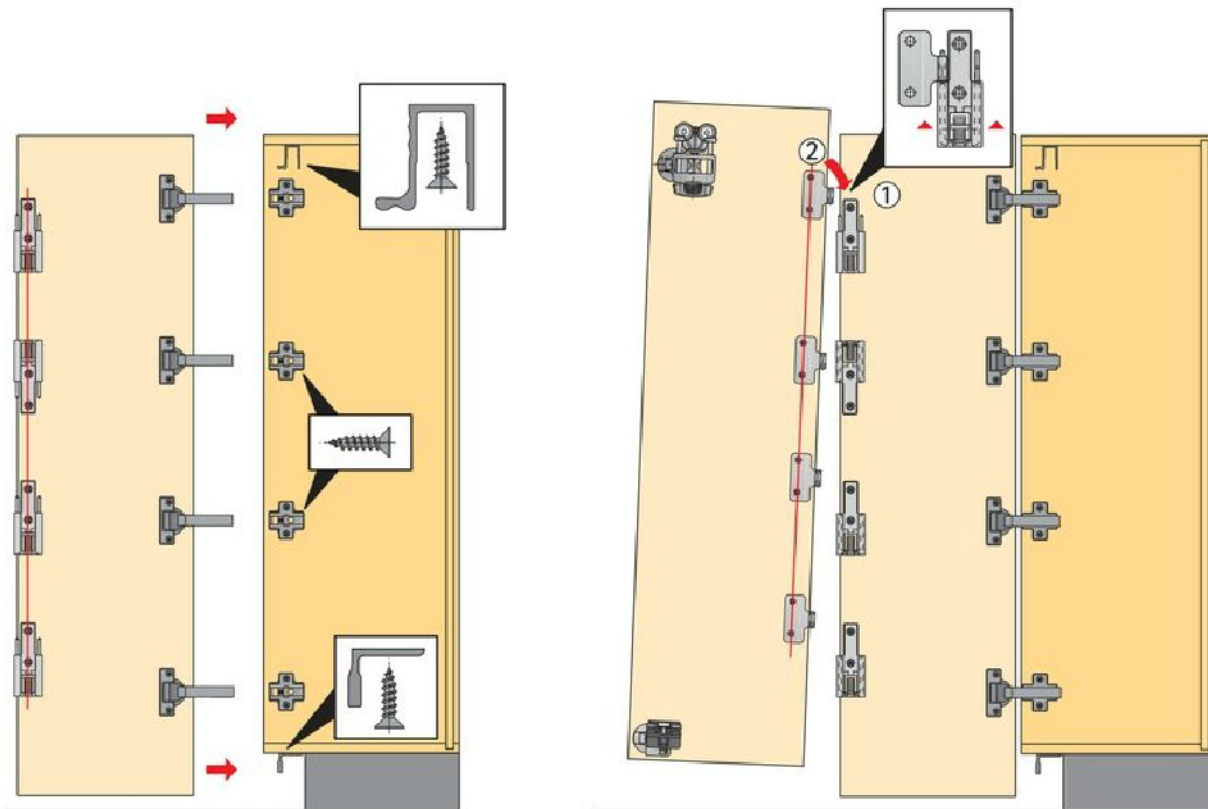
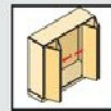
Door width = inside cabinet width + (2 x overlay*)
Door panel width = inside cabinet width - (1 x reveal) + (2 x overlay*) ÷ 2
* Overlay: max. 15 mm, C value 5 mm

Drilling pattern



*B Hole spacing mm	13,5	14	14,5	15	15,5
Reveal mm	5	4	3	2	1

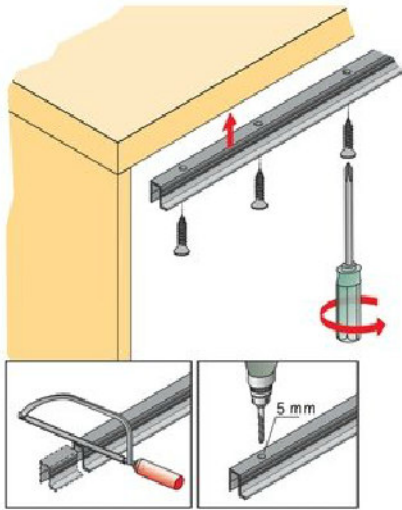
Folding door fitting Wing Line 780
for 1 folding door with 2 panels
Assembly



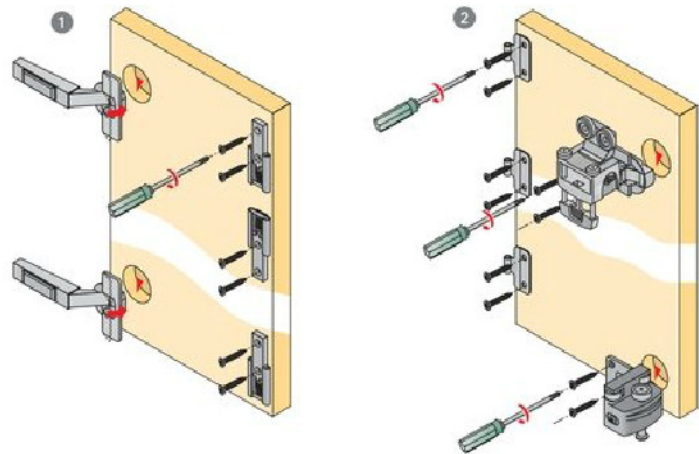


Folding door fitting Wing Line 780 for 1 folding door with 2 panels Assembly

Assembly runner profile



Preparing the door set



Mounting the door set

