



# GALVIN HARDWARE PTY LTD.

CABINET & FURNITURE HARDWARE SUPPLY SPECIALISTS

HEAD OFFICE: 39 HOWE ST, OSBORNE PARK, W.A. P.O. BOX 1192, OSBORNE PARK 6917  
PHONE: (08) 9446 6333 FAX: (08) 9446 8865  
EMAIL: [hardware@galvinhw.com.au](mailto:hardware@galvinhw.com.au) WEBSITE: [www.galvinhw.com.au](http://www.galvinhw.com.au)  
BRANCHES: W.A. = BUNBURY WANGARA S.A. = ADELAIDE (THEBARTON)



## technical specifications

# furnipart ELE

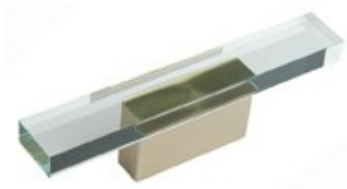
Code	Description	Display #	Price Incl GST
5168600326	<b>ele</b> 32mm Inox	F219	\$18.64
5168601606	<b>ele</b> 160mm Inox	F220	\$33.90
5168603206	<b>ele</b> 320mm Inox	F224	\$47.80
5168600328	<b>ele</b> 32mm Polished Chrome	F221	\$15.85
5168601608	<b>ele</b> 160mm Polished Chrome	F222	\$28.90
5168603208	<b>ele</b> 320mm Polished Chrome	F226	\$39.05



Inox



Polished Chrome



Glass