

Kitchens, Bathrooms & Laundry Solutions

Splashbacks & Panels

# Solutions for your Home

---

For your nearest Akрил stockist  
please call: 1800 464 728

---

## Features at a Glance

---

Unique, high-tech polymer

---

Adhere with a clear neutral cure silicone

---

Hi-Gloss finish

---

10-year UV warranty

---

Available off-the-shelf in designer colours

---

Can be colour-matched to suit  
(depending on project scale)

---

Scratch resistant

---

Scratches can be polished out

---

Easy to work- easy to install

---

Higher heat distortion (up to 80° Celcius)

---

Lighter, more cost-effective than painted glass

---

Environmentally friendly: recyclable/ lower energy  
than glass to produce

---

100% recyclable

---

Builders have on-site control

---

25 times more impact resistant than glass

---

Available in various sizes

---

No grout to clean

---

Highest chemical resistance in category

---

---

Manufactured in Australia by



37 Hosie Street, Bayswater VIC AUS 3153  
Telephone: (613) 8720 7600  
Facsimile: (613) 9729 5197  
Email: [cme@composite.com.au](mailto:cme@composite.com.au)



# What is Akril?

The new, environmentally friendly way to add colour, functionality and durability to your home.



For residential or commercial projects — wet areas, decorative panels and virtually any vertical surface — Akril is brilliant. It's lightweight, cost effective, easy to cut to size and install on site.

Best of all, it lets your brilliant ideas shine through.

Akril is manufactured in Australia from an environmentally friendly, highly engineered polymer enhanced with colour. It's 50% lighter than glass and 25 times more impact resistant. Akril is the logical alternative to glass as it won't shatter, crack or chip when hit with force and on average is 40% cheaper to install. It is extremely DIY friendly and easy to install with only standard power tools required for installation.

With its high impact resistance Akril won't scratch easily and will not grow bacteria making it the perfect solution for high use areas such as kitchens where food is prepared, laundries, bathrooms, shower walls as well as your entertaining areas.

Akril is an extremely high gloss quality, durable product that is abrasion resistant. Should you scratch or damage Akril in some way, you will be confident in the knowledge that any scratches can be easily buffed out and returned to Akril's original finish.

Akril's ease of repairability in being able to simply return the product back to its original form, is a unique feature of the product.

You will be able to transform almost any vertical surface into a beautiful feature in and around your home.

# Decorator Range

We have a range of designer colours available in a striking gloss finish. We are also able to colour coordinate to your requirements if you have a large project with specific colour needs.

## Solid Colours

---



## Metallic Colours

---



# The Range

## Polymer: Decorator Range

### Standard Panel Size

Height	Width	Thickness
1220mm	2440mm	4mm or 6mm
1220mm	3050mm	4mm or 6mm

### Kitchen Splashback Panel Size

Height	Width	Thickness
575mm	1200mm	4mm
575mm	2600mm	4mm
600mm	3050mm	4mm or 6mm
680mm	3050mm	4mm
725mm	1200mm	6mm
725mm	2440mm	6mm
725mm	3050mm	6mm
760mm	1200mm	4mm
760mm	2600mm	4mm

### Shower Wall Panel Size

Height	Width	Thickness
920mm	2000mm	4mm or 6mm
900mm	2440mm	4mm
1220mm	2000mm	4mm or 6mm

### Vanity Splashback Panel Size

Height	Width	Thickness
300mm	900mm	4mm
300mm	1200mm	4mm

### Kickboard Panel Size

Height	Width	Thickness
150mm	2440mm	4mm or 6mm

## Polymer: Select Range

### Splashback Panel Size

Height	Width	Thickness
575mm	2600mm	4mm
725mm	2440mm	6mm
760mm	2600mm	4mm

### Shower Wall/ Wall Panel Size

Height	Width	Thickness
900mm	2440mm	4mm
920mm	2000mm	4mm or 6mm
1220mm	2000mm	4mm or 6mm
1220mm	2440mm	4mm or 6mm

## Glass Filler Panels

Height	Width	Thickness
200mm	595mm	5mm <sup>^</sup>
200mm	895mm	5mm <sup>^</sup>
650mm	595mm	5mm
650mm	895mm	5mm
730mm	595mm	5mm
730mm	895mm	5mm

<sup>^</sup> Not available in Akril Select

## Stainless Steel Filler Panels

### Stainless Steel Filler Panels- Vertical Grain

Height	Width	Thickness
650mm	597mm	1mm
650mm	897mm	1mm

### Stainless Steel Filler Panels - Horizontal Grain Finger Print Resistant

Height	Width	Thickness
650mm	597mm	1mm
650mm	897mm	1mm
730mm	597mm	1mm
730mm	897mm	1mm

# The Akril Solution



# Akril is a highly engineered polymer, enhanced with colour, that offers a new source of design inspiration.



This durable panel was originally developed as a cost effective alternative to painted glass but its qualities of versatility, flexibility and workability allow it to stand alone in a range of domestic, commercial and display situations.

Having half the weight and being more cost effective than painted glass is a great start—but Akрил has so much more going for it.

It's ready availability and ease of installation reduces lead times and delays. It has higher heat distortion than conventional polymers (up to 80° Celsius) which means it has more applications. What's more, scratches can be polished out.

In so many ways, 'brilliant' is the only word that can sum up Akрил's great qualities so completely. From the lustre of its surface to the depth of its colour.

Brilliant! From its versatility and durability, to its extraordinary practicality on site.

Now, that's truly brilliant.

Pictured

Arctic Breeze + Brunetti Metallic  
Shower Splashback

# Shower Splashbacks

## No grout makes cleaning easy!



Simply use standard non abrasive household cleaners to keep your Akril panels clean. No harsh scrubbing required.

Environmentally friendly, Akril comes in a range of designer colours and finishes that are at home in virtually any vertical application; straight, shaped or curved. Let your imagination loose in showers, bath surrounds and laundry walls.

That's brilliant.

# Akri Select: A revolutionary new system for splashbacks & panels





# Akril Select

Bring life to your kitchen,  
bathroom, shower area  
or entertaining space.

Akril Select is proudly manufactured in Australia using an innovative process.

With the same quality and features you are used to with our standard Akril range, Akril Select will offer a modern and vibrant look without the costly price tag of similar products that are available.

We offer a range of designs giving you the option to coordinate with many decors. Akril Select will be the envy of your friends making any space a feature of your home.

Akril Select is an investment in your home not just an investment in a great product.



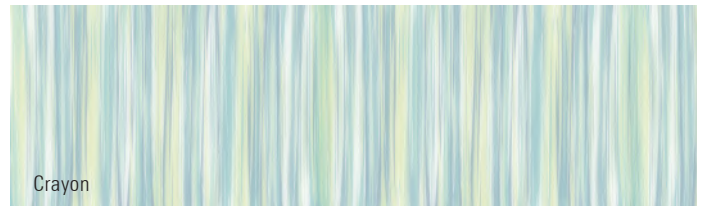
Pictured  
(right)

Wheat Grass  
Bathroom Splashback



# Akril Select

Designs to bring  
new life to your home.





Bokeh



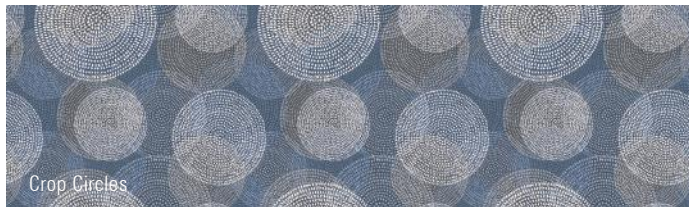
Blur



Ocean Wave



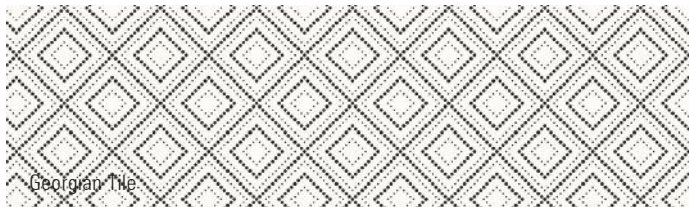
Ocean Fractal



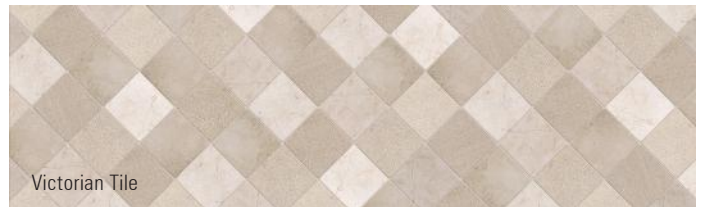
Crop Circles



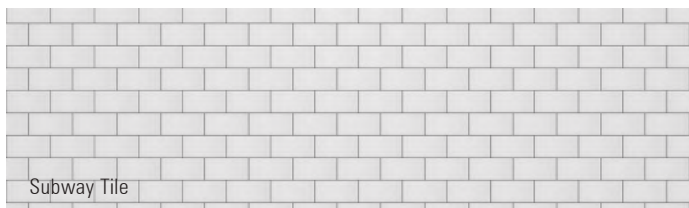
Butcher Block



Georgian Tile



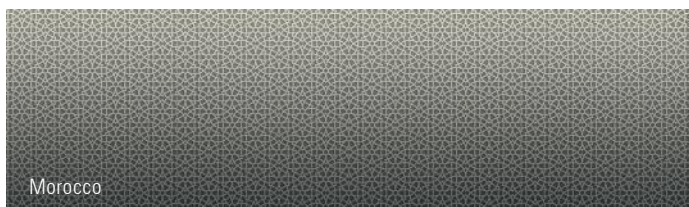
Victorian Tile



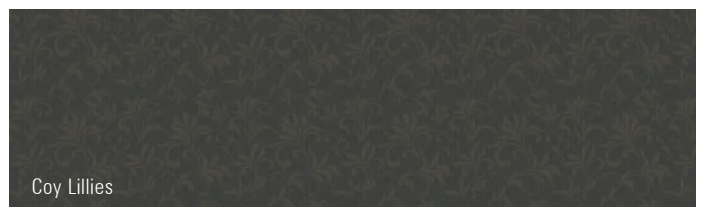
Subway Tile



Red Brick



Morocco



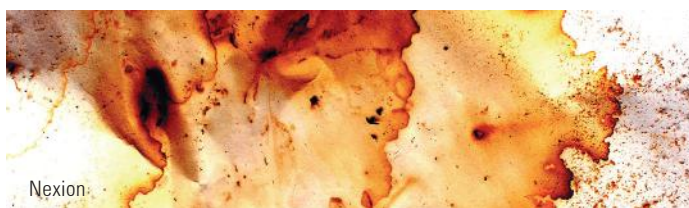
Coy Lillies



Chestnut Wallpaper



Watercolour



Nexion



Copper



Coffee Smoke

**Note:** When joining an image please do not mix sheet sizes. The sheet size must be the same for the image to follow continuously across two sheets. For single sheet purchases please note the image. When using the glass colour matched panel system, slight colour differences can occur between the glass and polymer panels due to the nature of glass composition. Everything possible will be done to deliver the best match however due to the above factors a perfect match cannot be guaranteed every time.



# Panel Orientation

Akril Polymers can be used around the home in many applications, sometimes in a vertical orientation such as in showers or feature walls. Our Select range can be reorientated to accommodate this and to provide a design across one or more vertical panels.

To order a Select Polymer make a note on your order clearly stating you require the design in a vertical orientation.

If you require the design to be continuous across more than one sheet clearly note this at the same time.

Please note that only a section of the Select design is able to be provided when ordering in a vertical orientation. Our designer will choose the best section based on your order requirements. See below for an example.



Forest Magic – Horizontal



Forest Magic – Vertical

Pictured  
(left)

Dandelion Drops Shower Walls  
Using a Continuous Image

Pictured  
(below)

Green Mist Kitchen Splashback  
and Horizontal Grain Stainless Steel Filler Panel

# Akril Stainless Steel Filler Panels

Akril offer a range of stainless steel filler panels to give you even more options in your kitchen.

Easy DIY installation directly over a Akril Polymer gives you the flexibility to use behind a gas cooktop and protect against radiant heat.

With 4 sizes available in horizontal grain and 2 in vertical, Akril stainless steel filler panels are sure to match your kitchen.

Nano Coat technology gives all horizontal grain stainless steel filler panels fingerprint resistance, a feature that removes one of the most common issues with stainless steel in the home.



Horizontal Grain – Fingerprint Resistant

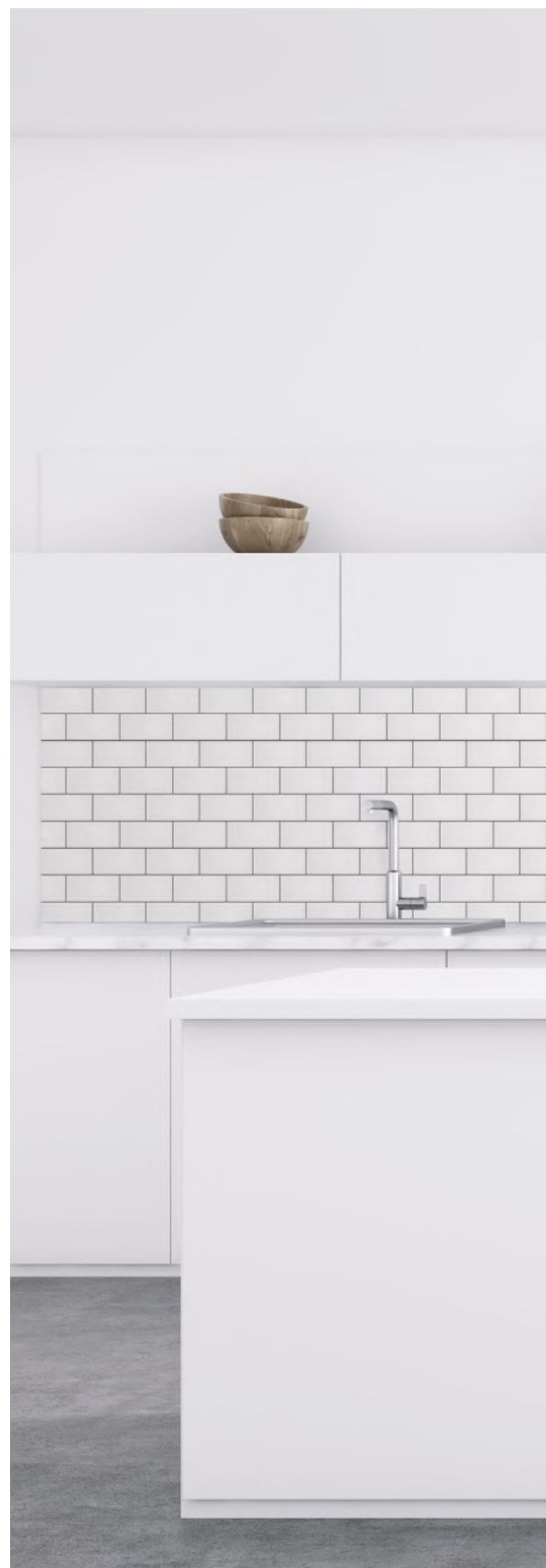


Vertical Grain



# Akril Polish Kit

The Akril Polish Kit can be used to remove scratches or to create beautiful polished edges on Akril Polymers. By working through various grades of sand paper and finishing with the Ultra Polishing Cream, you can remove scratches and return the surface to its original lustre.



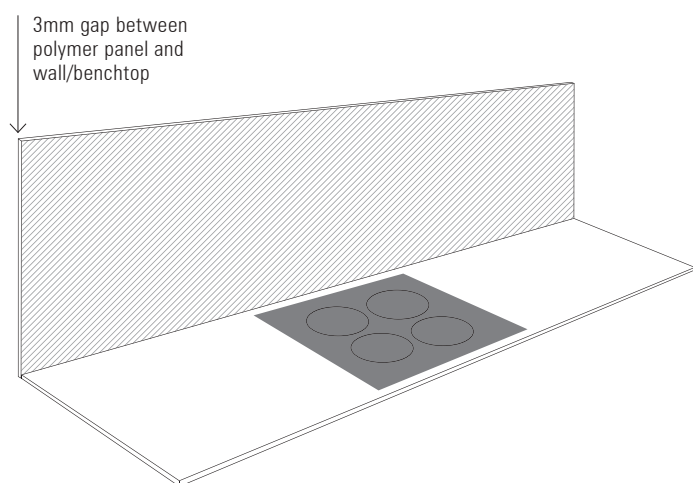


# Using Akril Behind Cooktops

## Induction/Electric/Ceramic/Gas

### Induction, Electric & Ceramic Cooktops\*

Akril's engineered polymer is durable and repairable at the same time. It meets Australian standards when installed directly behind any electric, ceramic or induction cook top, reducing the time and hassles associated with custom glass splashbacks



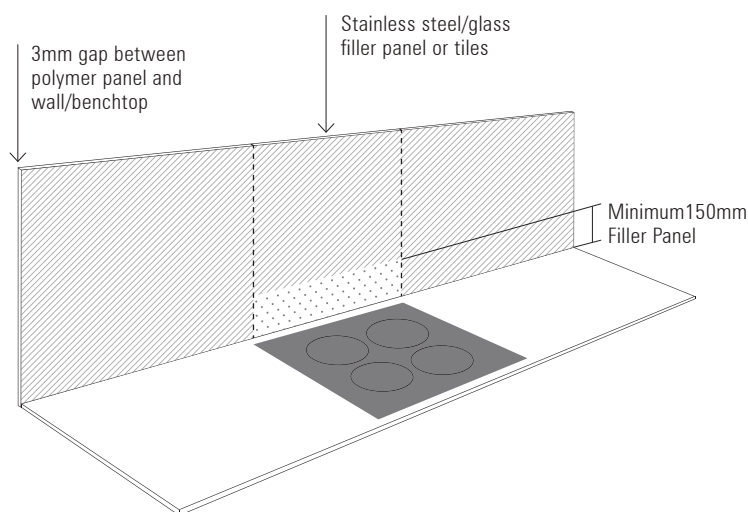
■ Akril Polymer Panel    □ Bench Top    ■ Cooktop

### Gas Cooktops\*

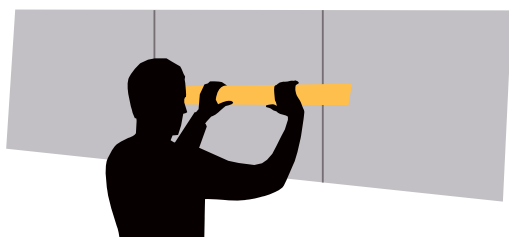
For gas cooktops we recommend a minimum 200mm clearance from the periphery of the gas burner to the Akril splashback as per the AS/NZS standards, AS/NZS 5601.1:2010 Domestic Kitchen Assemblies—Installation.

Australian standards require the use of a minimum 150mm high non combustible material behind any gas cooktop. The use of a colour matched Akril glass filler panel is perfect for this giving a seamless colour finish. Alternatively Akril stainless steel filler panels or tiles behind the cooktop can also be used.

That's brilliant.



■ Akril Polymer Panel    □ Bench Top    ■ Cooktop    ■ Filler Panel



Note: Alter the thickness of silicone applied behind the different sizes of glass and polymer to obtain a flush finish across all materials. Pressing a straight edge against panels on the wall will assist with this.

\*Warranty will be void if Akril comes into direct contact with cooking apparatus or exposed to prolonged radiant heat and not installed as per manufacturers specification. Please refer to [www.akril.com.au](http://www.akril.com.au) for full installation manual and warranty. When using the glass colour matched panel system, slight colour differences can occur between the glass and polymer panels due to the nature of glass composition. Everything possible will be done to deliver the best match however due to the above factors a perfect match cannot be guaranteed every time. Always refer to cooktop and splashback installation manual before starting any installation.

# Brilliant Installation

With no special tools required,  
Akril is easily installed by  
any tradesperson.



Simply cut to size and adhere Akril  
with a clear neutral cure silicone.

Durable, versatile, flexible and workable  
are the qualities that make Akril's  
engineered polymer stand alone in a variety  
of domestic and commercial applications.

Brilliant!

—  
Please refer to website for full  
installation manual and warranty.





akril™

brilliant



Phone 1800 46 47 28  
Enquiries [enquiries@akril.com.au](mailto:enquiries@akril.com.au)  
Orders [orders@composite.com.au](mailto:orders@composite.com.au)  
online [www.akril.com.au](http://www.akril.com.au)

Manufactured in Australia by



37 Hosie Street, Bayswater VIC AUS 3153  
Telephone: (613) 8720 7600  
Fax: (613) 9729 5197  
Email: [cme@composite.com.au](mailto:cme@composite.com.au)



08/18